



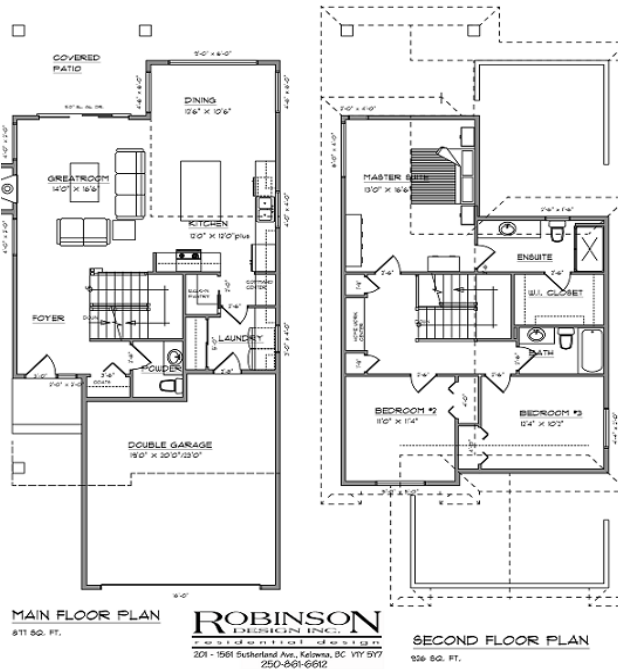
FRONT ELEVATION



REAR ELEVATION

The Arkose in Cornerstone Subdivision

1803 Sq./ft. 3 Bedroom, 2 1/2 bathroom with attached garage. This home offers an open great room, a custom built kitchen with pantry and main floor laundry. You will also find 9' Main Floor Ceilings, Laminate flooring, Vinyl Tile and Carpet. As well as a Gas Fireplace and high end finishing.

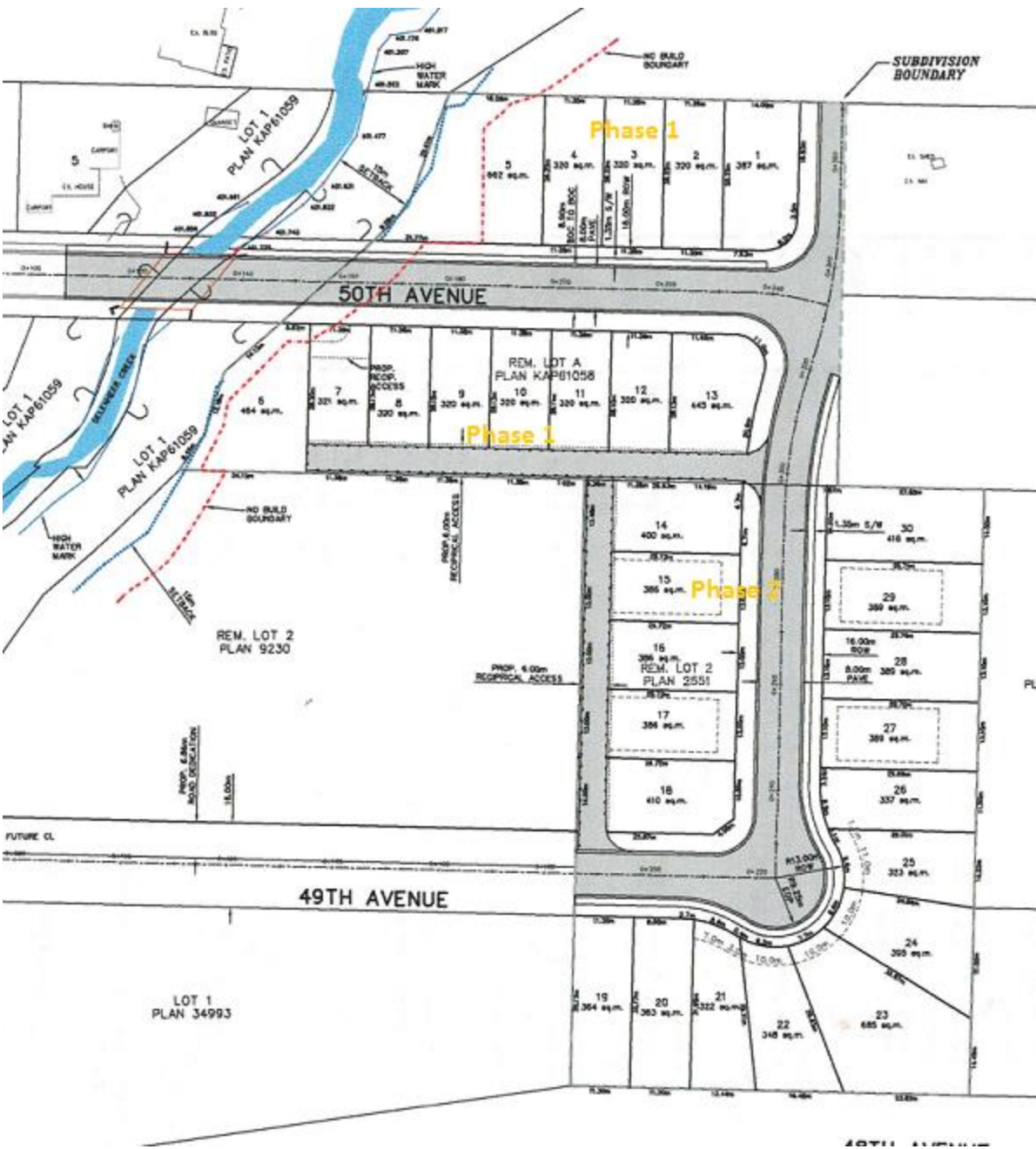


#5 450 Lakeshore Rd NE
Box 716
Salmon Arm BC, V1E 4N8
P. 250.832.2567
F. 250.832.5210
whitstone.ca



CHARACTER. CRAFTSMANSHIP. CREATIVITY

Cornerstone Subdivision



Whitstone Developments reserves the right to change the floor plans & square footage at any time. Room sizes & dimensions are approximate & may change. No unauthorized reproduction is allowed.