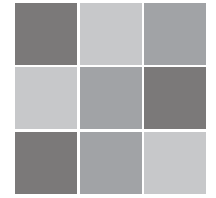


URBANICA SERIES



V2
High degree of colour variation

AVAILABLE COLOURS



Ash



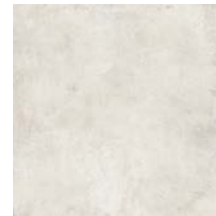
Corten



Emerald



Iron



Salt

IN-STOCK

| | 24"x48" 60cmx120cm Rectified | 24"x24" 60cmx60cm Rectified |
|---------|------------------------------------|-----------------------------------|
| | MATTE | |
| Ash | O2UR12640 | O2UR640 |
| Corten | O2UR12650 | O2UR650 |
| Emerald | O2UR12690 | O2UR690 |
| Iron | O2UR12670 | O2UR670 |
| Salt | O2UR12610 | O2UR610 |

SPECIAL ORDER¹

| MATTE Rectified | OUTDOOR* Rectified 9mm Thickness | OUTDOOR** Rectified 2cm Thickness | MOSAICO 2"x2" pcs /sheet | MOSAICO ESAGONA 4" pcs /sheet |
|---------------------------|---|--|------------------------------------|---|
| 30"x60" 75cmx150cm | 36"x36" 90cmx90cm | 36"x36" 90cmx90cm | 12"x12" 30cmx30cm | 13.8"x14.8" 35cmx37.5cm |
| 36"x36" 90cmx90cm | | | | |
| 12"x24" 30cmx60cm | | | | |

* Outdoor, 9mm Thickness available in Ash, Corten and Salt only.

** Outdoor, 2cm Thickness available in Ash and Salt only.

TECHNICAL INFO

| | | |
|---|--------------------------------------|--|
| C COMMERCIAL | RE RESIDENTIAL | |
| DCoF DYNAMIC COEFFICIENT OF FRICTION ≥ 0.42 | R10 SLIP RESISTANT (MATTE) | R11 SLIP RESISTANT (OUTDOOR) |
| FP FROST PROOF | | |

SPECIAL PIECES FOR ORDER²



Battiscopa

¹ Special order sizes and finishes available in most colours. Please consult with a sales representative for more information (availability dependent on order quantity).

² For colours and sizes please consult with a sales representative.